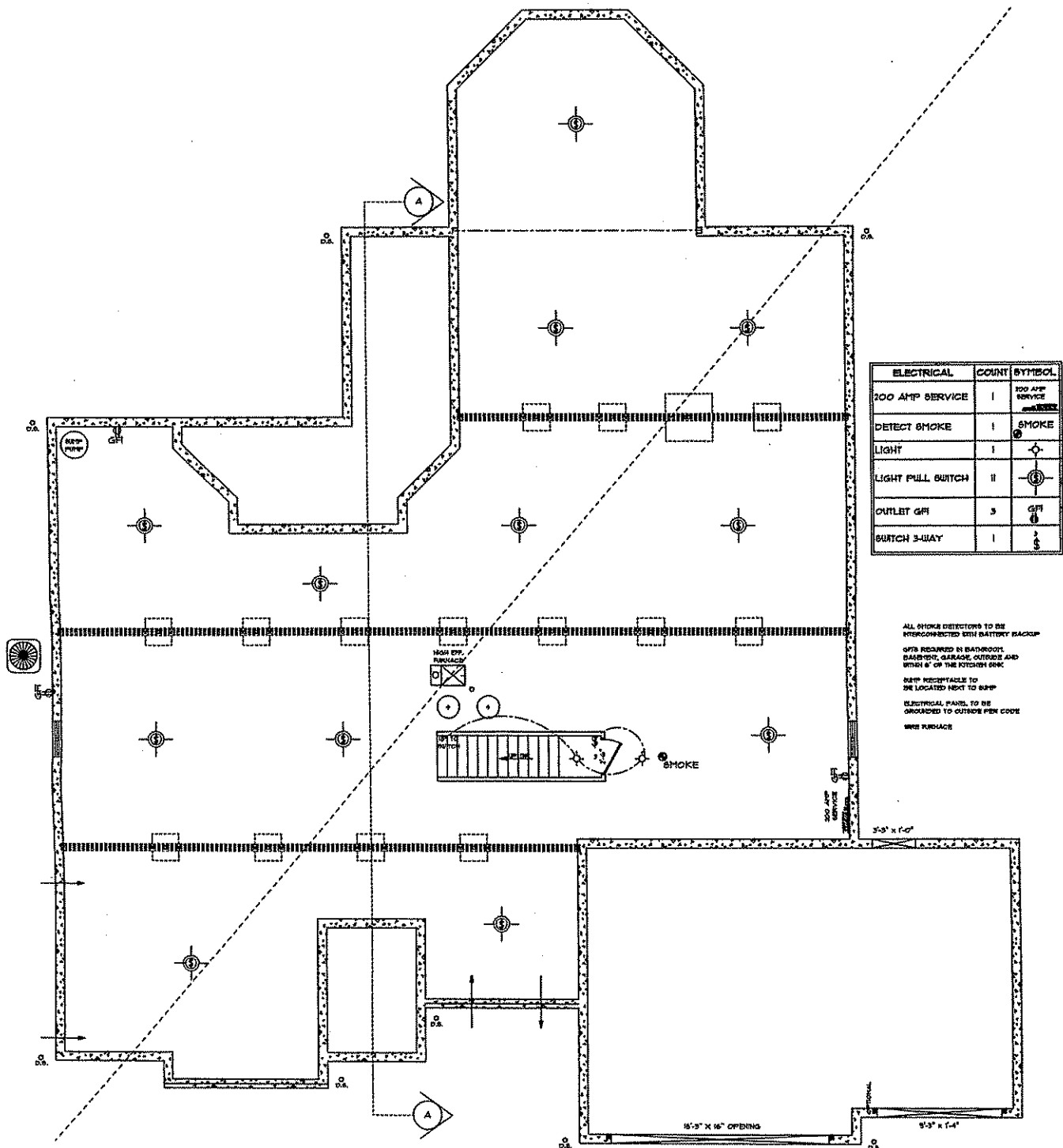


ELECTRICAL EXAMPLE

Adequate descriptions of electrical, plumbing, or mechanical systems are essential to assuring that the project can be built safely and will meet electrical, energy, and sanitary requirements in Ohio law. This description may take the form of a drawing, isometric, written description, table, schedule, specification, or any other form or method of adequately describing the proposed work and the systems that are a critical part of the building's service equipment. Narrative descriptions, graphic, or other pictorial documents could also be submitted.

The system descriptions must include:

- Mechanical: Equipment Type/Size, Location of Equipment, Type of Fuel, Heat Gain/Loss, Square Footage of Conditioned Space, Duct Size (Supply/Return), Equipment Efficiency Ratings
- Electrical: Service Size (General Loads, HVAC Loads, Total Loads), Panel Location in Dwelling, Size of Service Entry Cable, Location of Service (Overhead, Underground)
- Plumbing: Fixture Locations and Venting

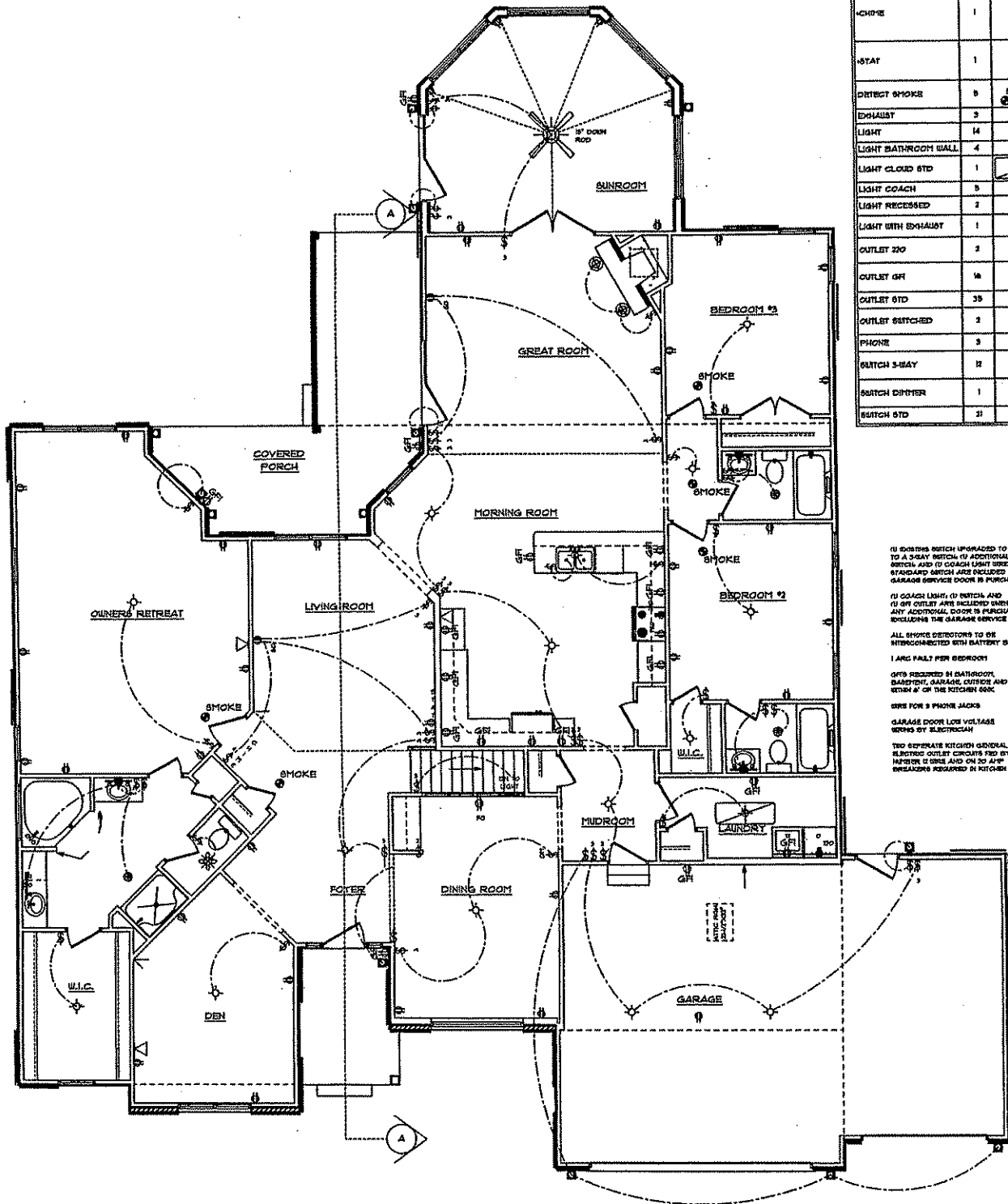


Adequate descriptions of electrical, plumbing, or mechanical systems are essential to assuring that the project can be built safely and will meet electrical, energy, and sanitary requirements in Ohio law. This description may take the form of a drawing, isometric, written description, table, schedule, specification, or any other form or method of adequately describing the proposed work and the systems that are a critical part of the building's service equipment. Narrative descriptions, graphic, or other pictorial documents could also be submitted.

The system descriptions must include:

- **Mechanical:** Equipment Type/Size, Location of Equipment, Type of Fuel, Heat Gain/Loss, Square Footage of Conditioned Space, Duct Size (Supply/Return), Equipment Efficiency Ratings
- **Electrical:** Service Size (General Loads, HVAC Loads, Total Loads), Panel Location in Dwelling, Size of Service Entry Cable, Location of Service (Overhead, Underground)
- **Plumbing:** Fixture Locations and Venting

ELECTRICAL EXAMPLE



ELECTRICAL	COUNT	SYMBOL
LIGHT	1	⊙
SWITCH 3-WAY	2	⊕
SWITCH 4-WAY	1	⊕
SWITCH STD	1	⊕
PHONE	1	⊕
STAT	1	⊕
DETECT SMOKE	8	⊕
EXHAUST	3	⊕
LIGHT	14	⊕
LIGHT BATHROOM WALL	4	⊕
LIGHT CLOUD STD	1	⊕
LIGHT COACH	3	⊕
LIGHT RECESSED	2	⊕
LIGHT WITH EXHAUST	1	⊕
OUTLET 220	2	⊕
OUTLET GFI	14	⊕
OUTLET STD	38	⊕
OUTLET SWITCHED	2	⊕
PHONE	3	⊕
SWITCH 3-WAY	12	⊕
SWITCH DIMMER	1	⊕
SWITCH STD	21	⊕

(1) 3-WAY SWITCH UPGRADED TO TO A 3-WAY SWITCH (2) ADDITIONAL 3-WAY SWITCH AND (3) COACH LIGHT USED TO A STANDARD SWITCH AND INCLUDED UNDER THE GARAGE SERVICE DOOR IS PURCHASED

(4) COACH LIGHT, (5) ENTRY AND (6) GFI OUTLET ARE INCLUDED WHEN ANY ADDITIONAL DOOR IS PURCHASED, INCLUDING THE GARAGE SERVICE DOOR

ALL SMOKE DETECTORS TO BE INTERCONNECTED WITH BATTERY BACKUP

1 ARC FULT PER BEDROOM

GFI'S REQUIRED IN BATHROOM, BREAKROOM, GARAGE, KITCHEN AND WITHIN 4' OF THE KITCHEN SINK

WIRE FOR 3 PHONE JACKS

GARAGE DOOR LOW VOLTAGE WORKS BY ELECTRICIAN

TWO SEPARATE KITCHEN GENERAL ELECTRIC OUTLET CIRCUITS PER BY NATION (2 ONE AND ONE AND ONE BREAKERS REQUIRED IN KITCHEN