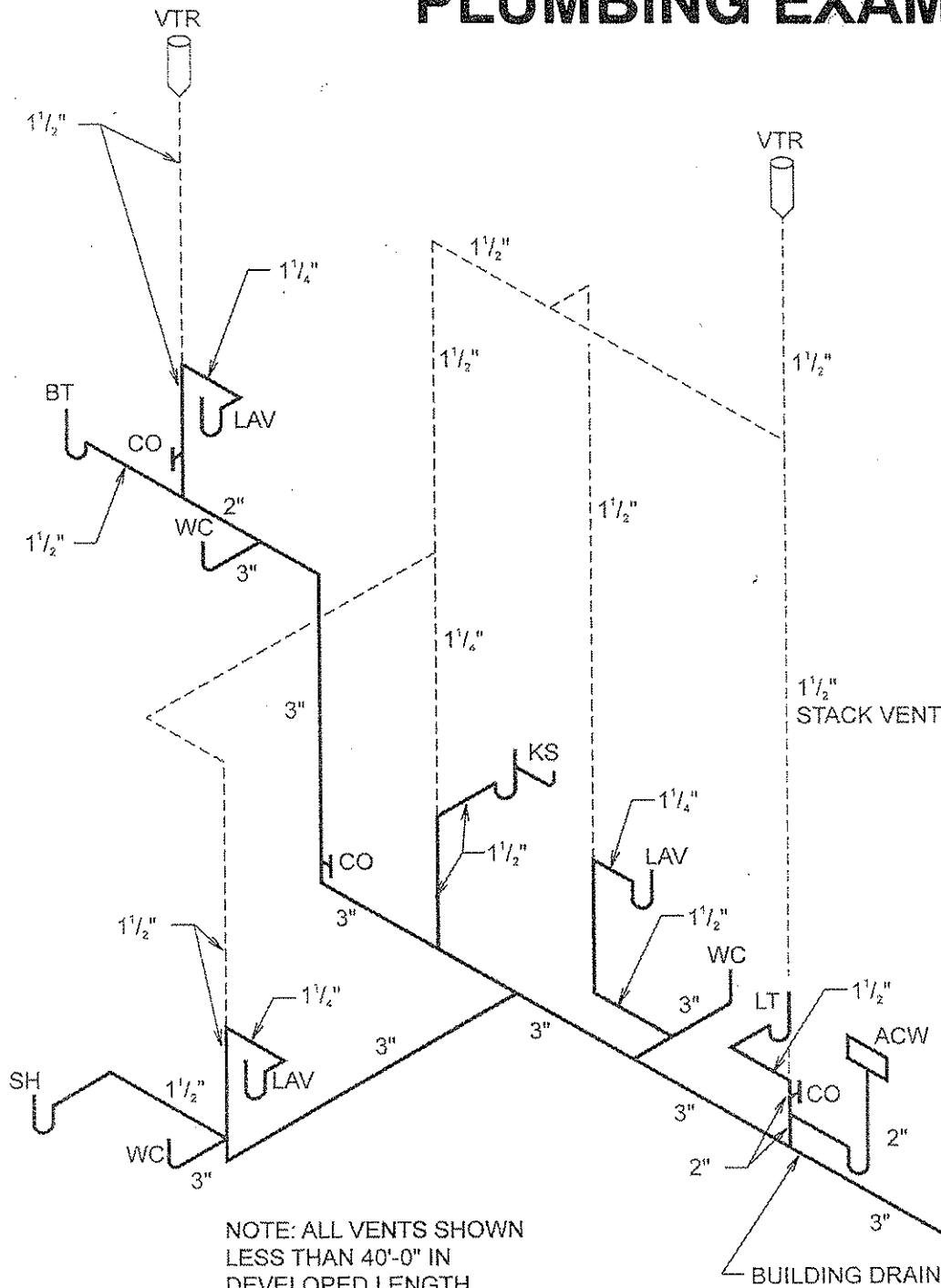


Adequate descriptions of electrical, plumbing, or mechanical systems are essential to assuring that the project can be built safely and will meet electrical, energy, and sanitary requirements in Ohio law. This description may take the form of a drawing, isometric, written description, table, schedule, specification, or any other form or method of adequately describing the proposed work and the systems that are a critical part of the building's service equipment. Narrative descriptions, graphic, or other pictorial documents could also be submitted.

The system descriptions must include:

- **Mechanical:** Equipment Type/Size, Location of Equipment, Type of Fuel, Heat Gain/Loss, Square Footage of Conditioned Space, Duct Size (Supply/Return), Equipment Efficiency Ratings
- **Electrical:** Service Size (General Loads, HVAC Loads, Total Loads), Panel Location in Dwelling, Size of Service Entry Cable, Location of Service (Overhead, Underground)
- **Plumbing:** Fixture Locations and Venting

## PLUMBING EXAMPLE



For SI: 1 inch = 25.4 mm, 1 foot = 304.8 mm.

Figure 916.2(3)  
VENT SIZING